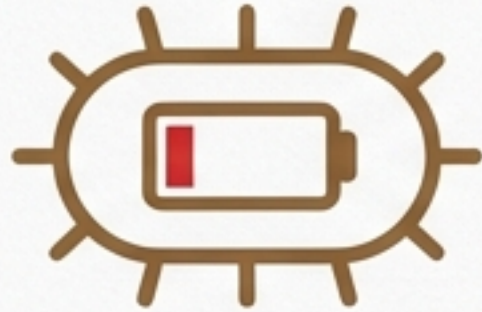




Integrating Nanobubble Technology with Aerobic Biofertilizers (*Comamonas* spp.) for High-Performance Agriculture.

# Executive Summary: Engineering the Aerobic Environment

## The Constraint



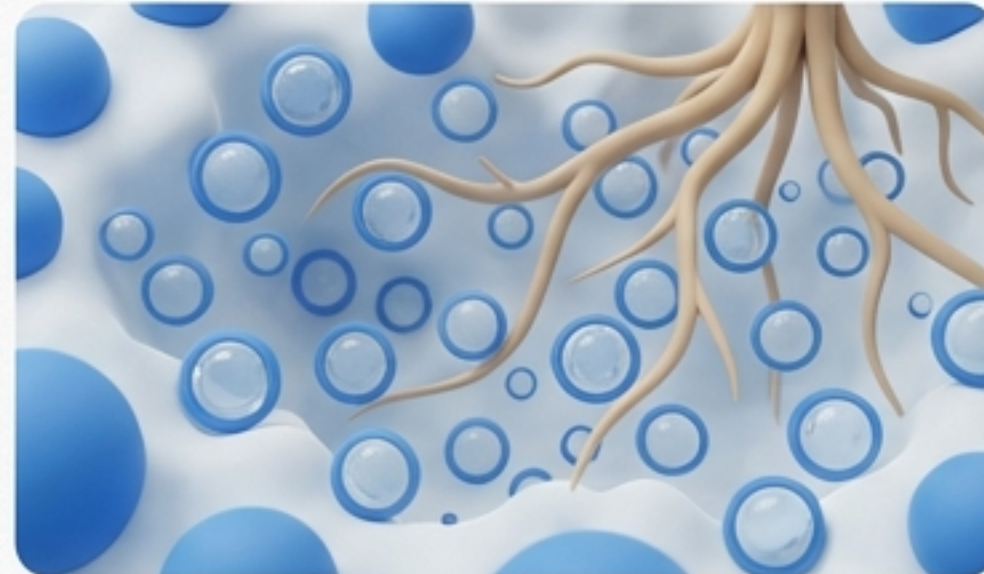
High-performance biofertilizers like *Comamonas testosteroni* and *Pseudomonas putida* are strictly aerobic. In standard irrigation, Dissolved Oxygen (DO) levels cap at 2-3 mg/L, creating anaerobic pockets that stifle microbial efficacy.



## The Catalyst



**Nanobubbles** (NB) defy buoyancy, maintaining stable DO levels near 30 mg/L. This creates a hyper-aerobic rhizosphere that actively suppresses anaerobic competitors (Firmicutes) and stimulates beneficial fungal networks.



## The Result

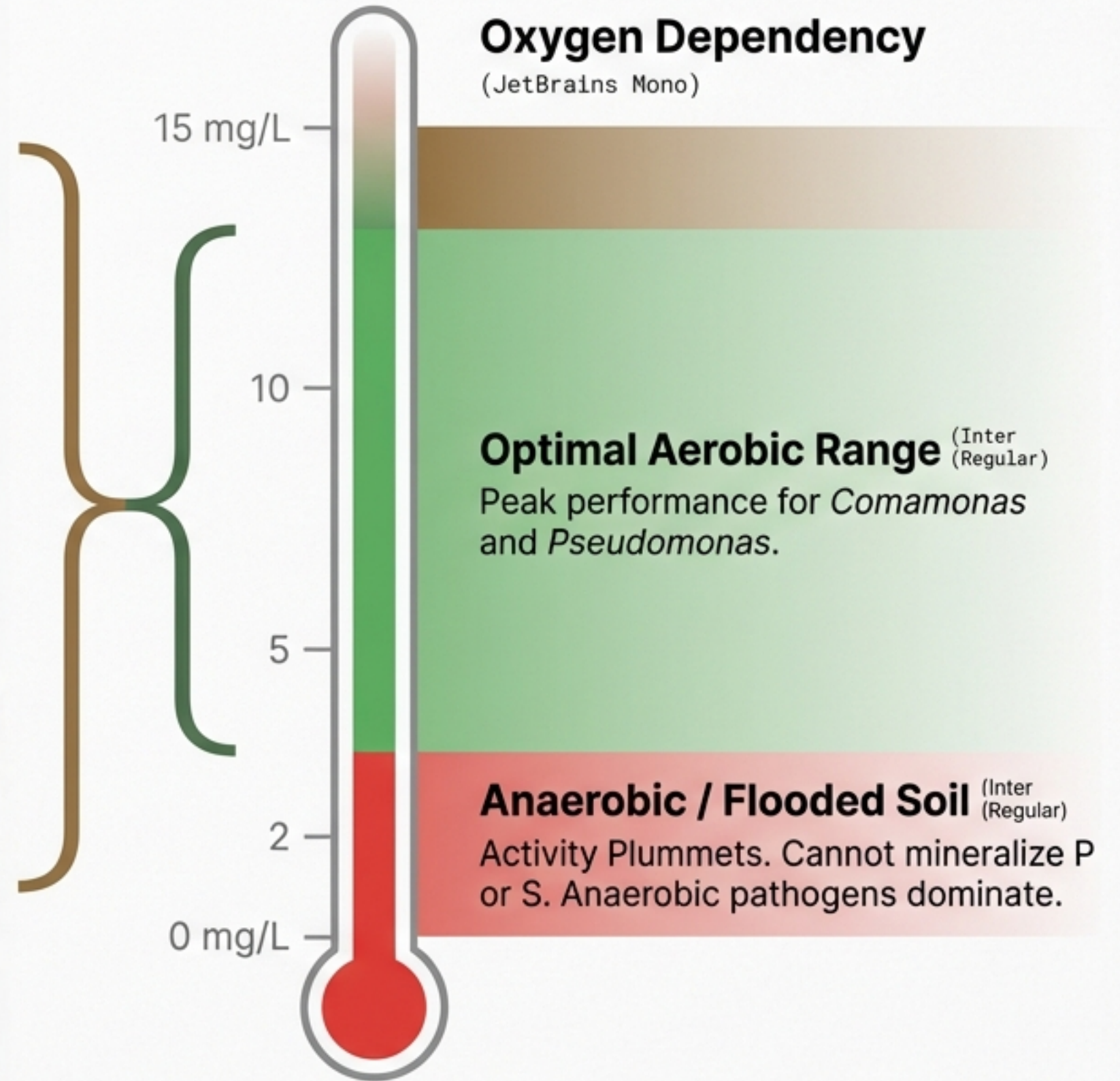
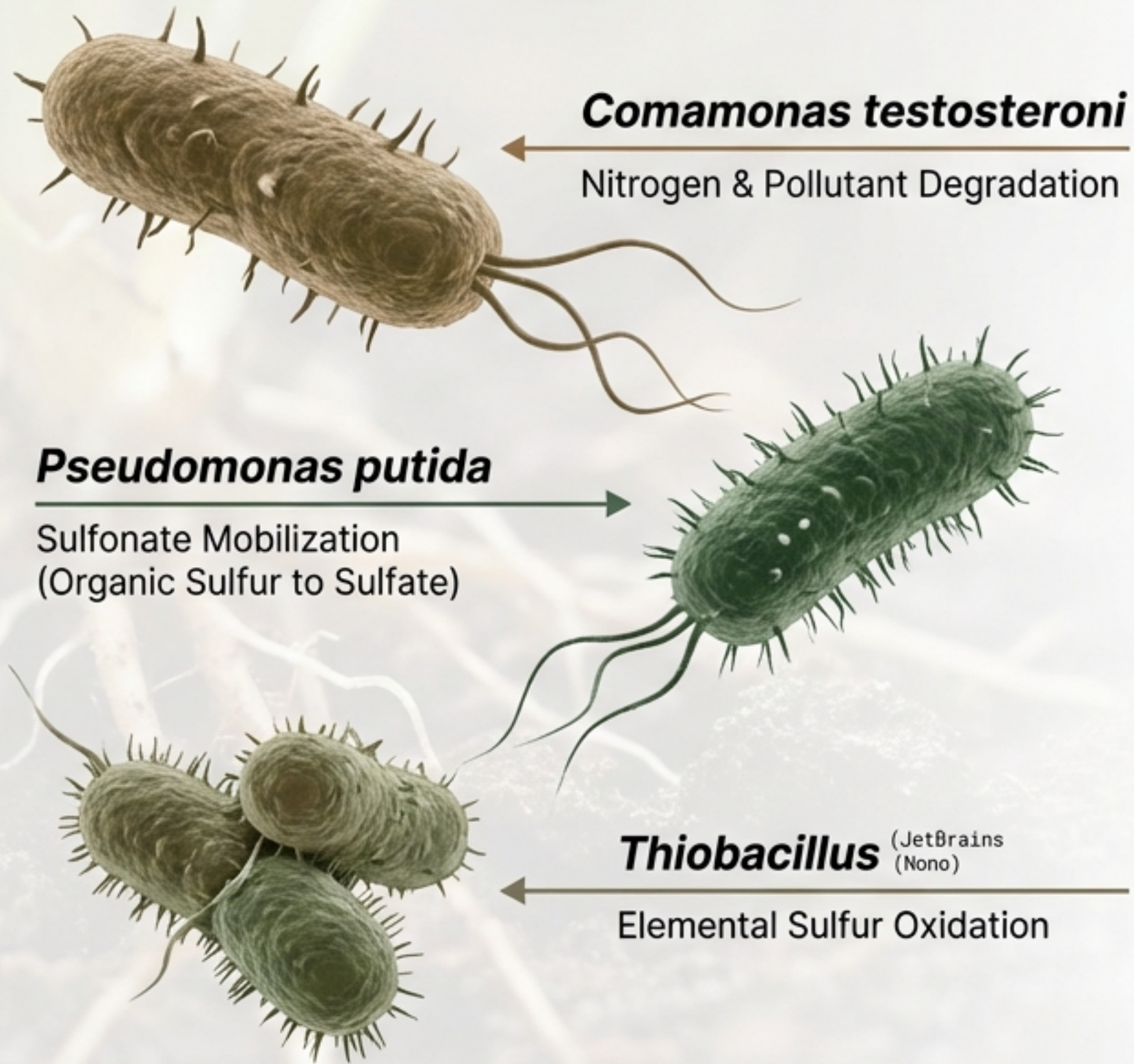


A synergistic effect that stabilizes yields (14-39% gain), reduces pathogens (*Pythium* down 74%), and manages salinity via leaching without expensive desalination.



**KEY INSIGHT:** Nanobubbles drive consistent yield uplifts of 14-39%, significantly outperforming the variable 10-30% range of biofertilizers alone.

# The Biological Engine: Powerful but Oxygen-Hungry



# The Technological Catalyst: A Stable Delivery System

## Nanobubbles vs. Macro Bubbles

### Macro Bubbles (Traditional Aeration)

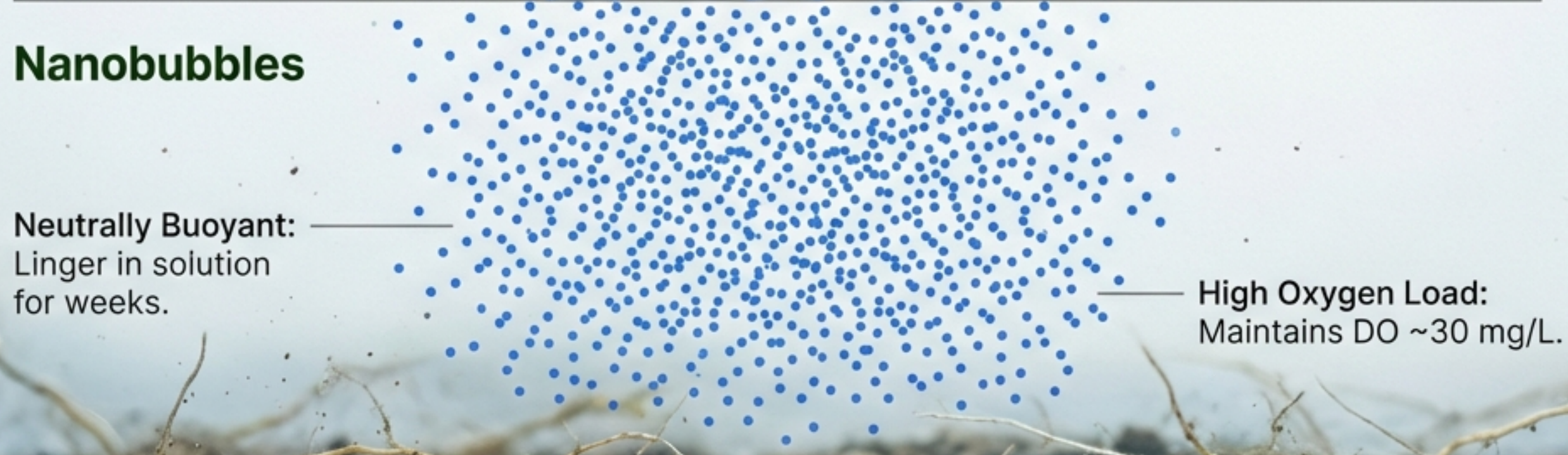


Low Oxygen Transfer:  
DO limits ~3 mg/L.

Buoyant: Rise and  
burst immediately.

Low Oxygen Transfer:  
DO limits ~3 mg/L.



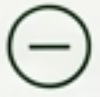
### Nanobubbles



Neutrally Buoyant:  
Linger in solution  
for weeks.

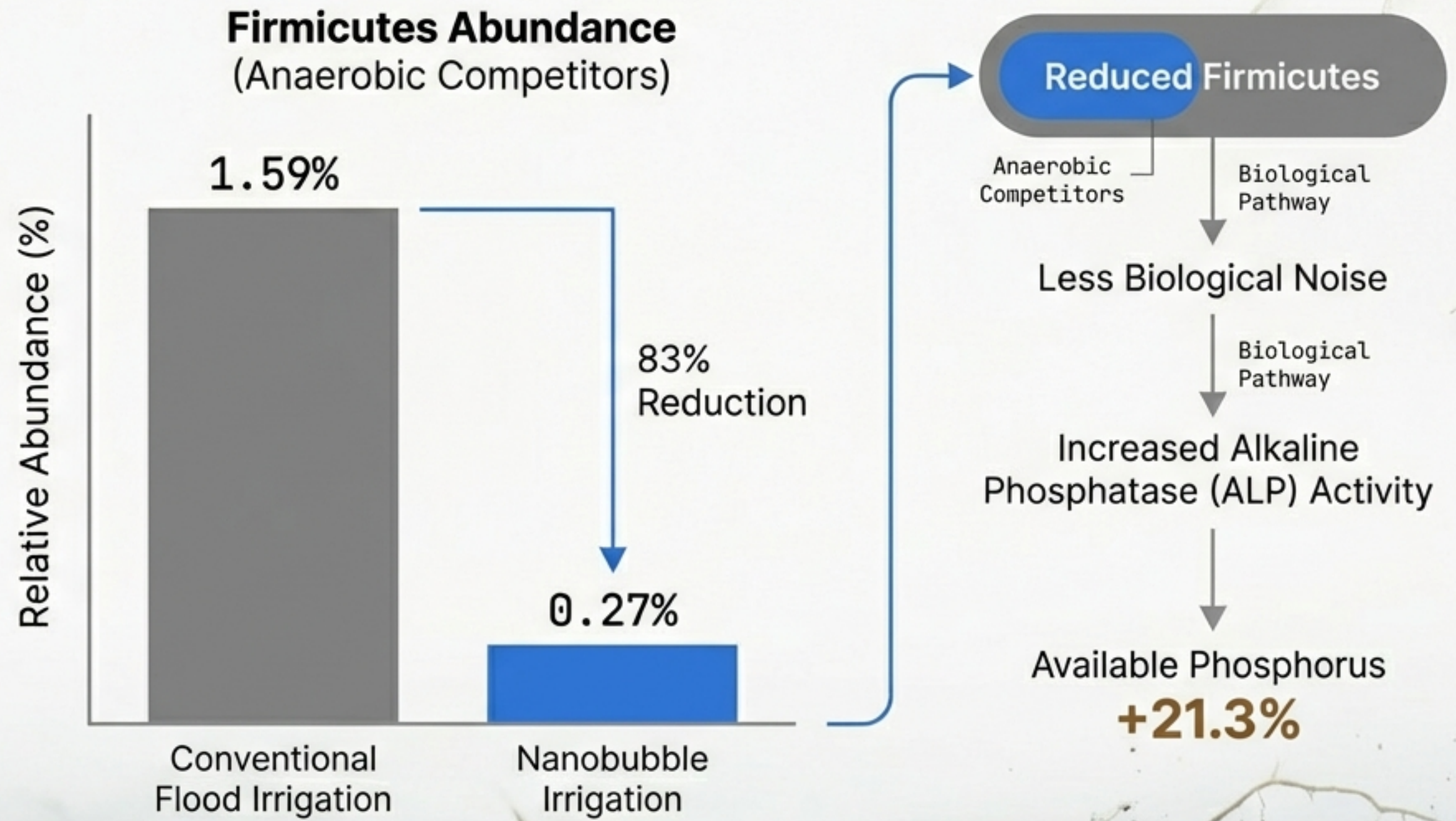
High Oxygen Load:  
Maintains DO ~30 mg/L.

### Physical Properties

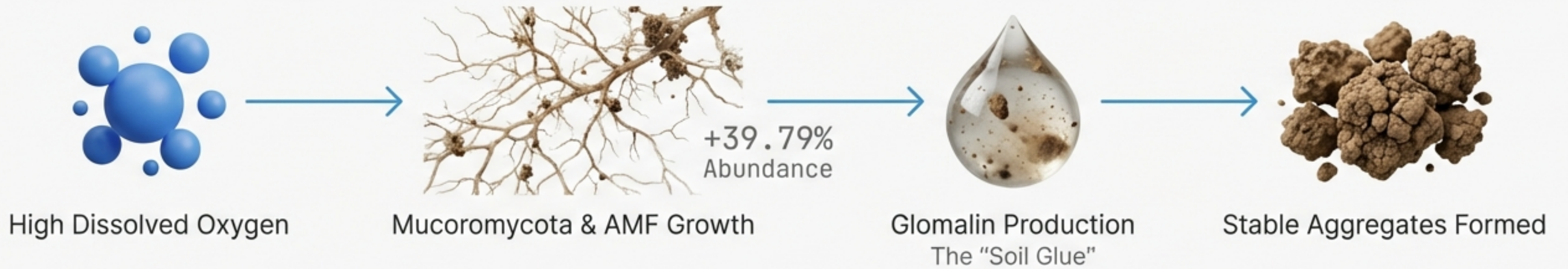
- **Size:** <200 nanometers 
- **Surface Tension:** Reduced (Improves soil micropore infiltration) 
- **Charge:** Negatively charged surface 

# Microbiome Engineering: The 'Firmicutes Shift'

High oxygenation actively selects the microbiome composition.



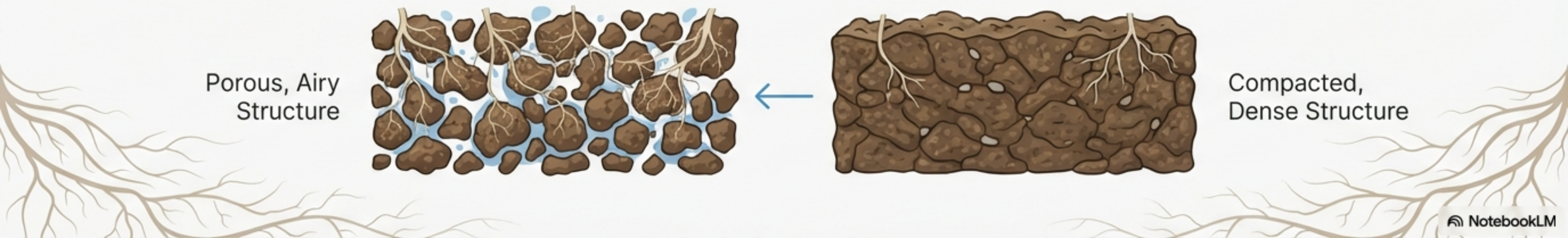
# Soil Architecture: The Fungal Connection



Soil Porosity:  
**+43%**

Soil Compaction:  
**-20%**

Root Penetration:  
**IMPROVED**



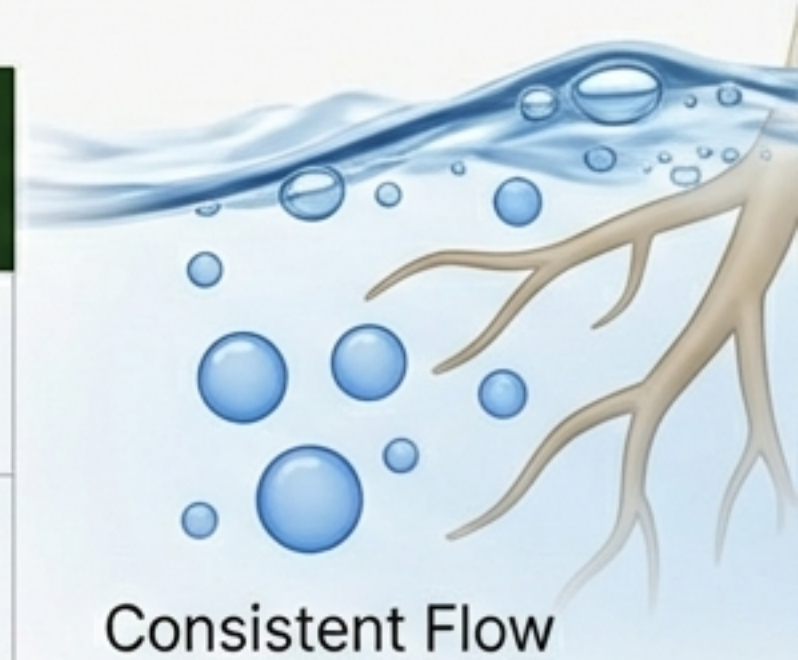
# The Oxygen Synergy Loop



# Head-to-Head: Yield Performance

Comparison of input consistency and impact.

Biofertilizers Alone	Nanobubble Technology
Yield Impact: 10-30%	Yield Impact: 14-39%
High variability. Dependent on successful establishment.	Consistent physical mechanism. Up to 40% in broad trials.

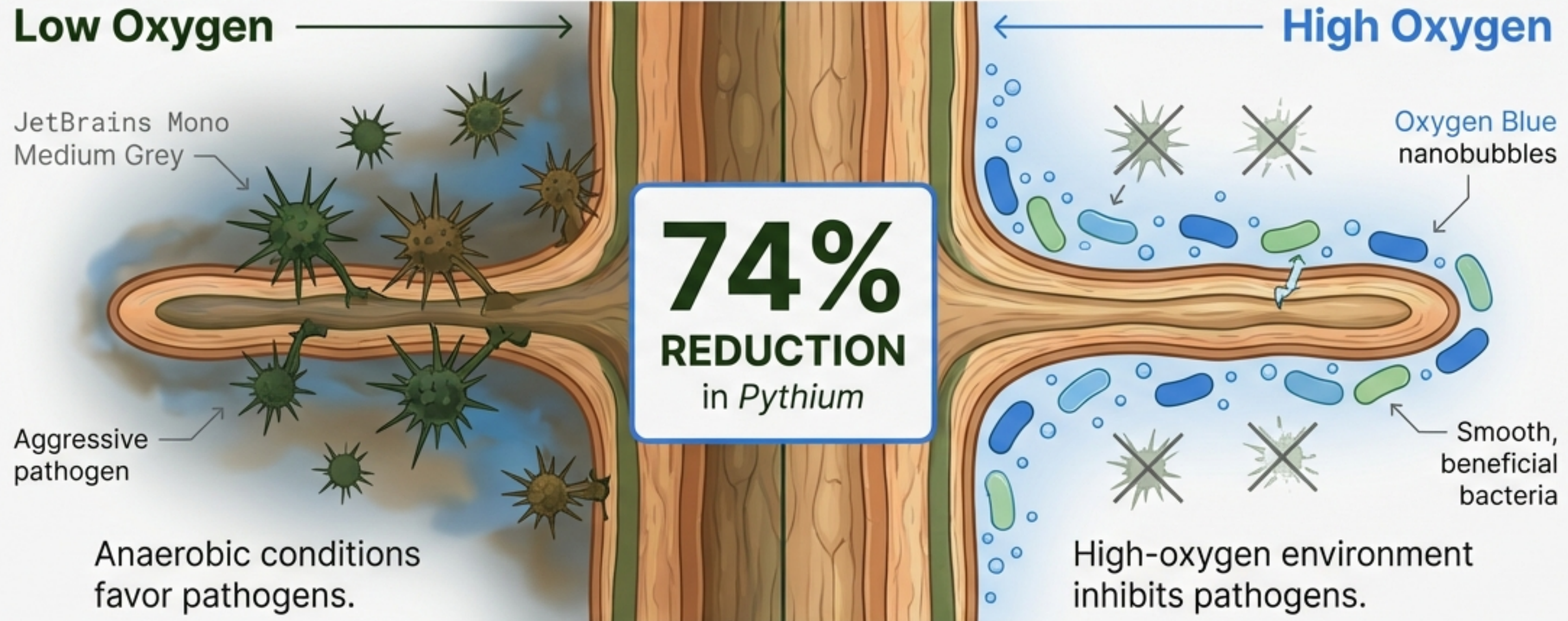


## Strawberry Field Trial Results



Nanobubbles provide a reliable baseline improvement that biologicals can build upon.

# Oxygen as a Preventative Biocide



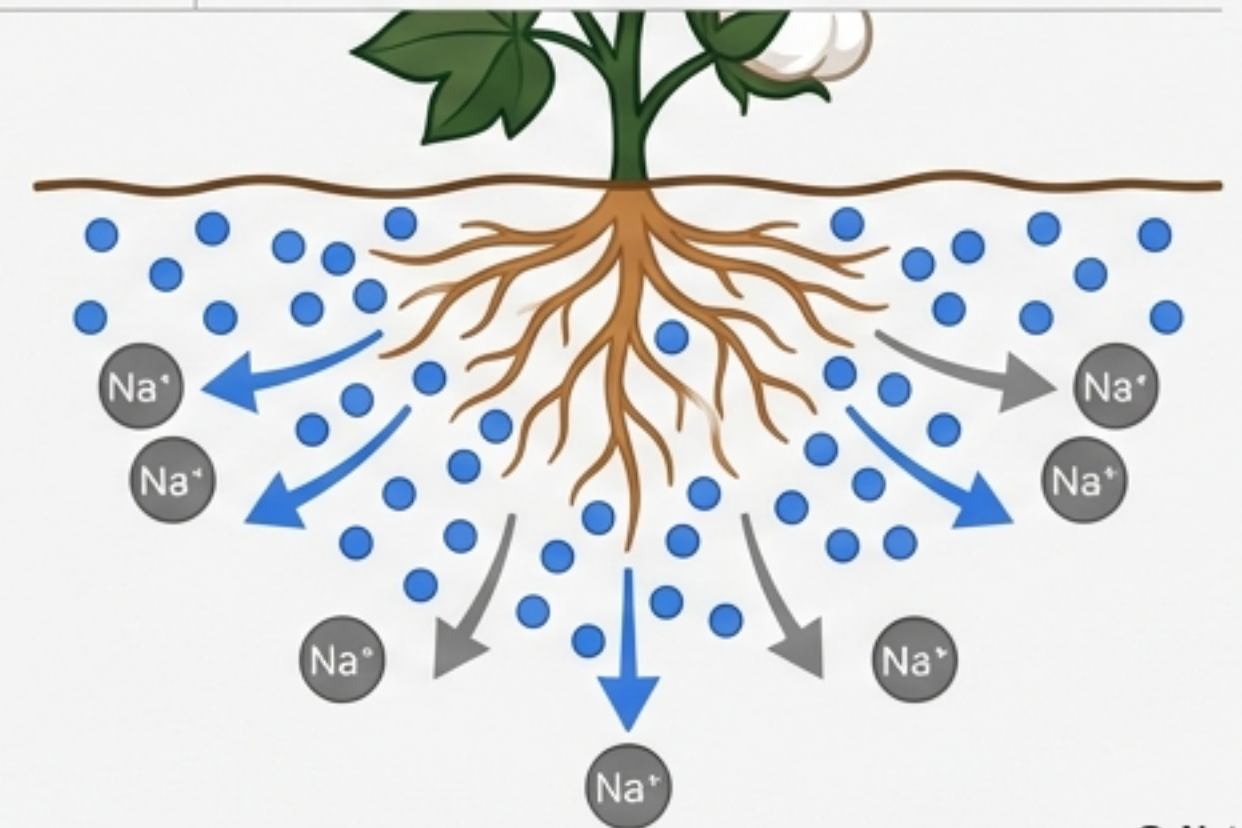
Nanobubbles disrupt the damp, low-oxygen habitat required by root rot pathogens, reducing the need for chemical fungicides.

# Salinity Management: Leaching vs. Purification

Inter Regular			Nanobubbles (NB)	Reverse Osmosis (RO)
1	Strategy	Hex 333333	Leaching & Management	Removal (>99%)
2	Energy Cost	Het 666666	Low (Aeration only)	High (2-5 kWh/m <sup>3</sup> )
3	Waste Product	Hex 333333	None	Toxic Brine
4	Effectiveness	Het 666666	16-26% Soil Salt Reduction	Near total desalination

## Use Case: Cotton in Saline Soil

44% Yield Increase utilizing Nanobubbles to manage salt stress.



# Economic Analysis: CapEx vs. OpEx

## Chemicals

**Type:** Operational Cost

**Cost:** Low Upfront, High Cumulative

**Hidden Cost:** Soil Degradation



## Biofertilizers

**Type:** Operational Cost

**Cost:** Moderate Recurring

**Risk:** Variable Efficacy



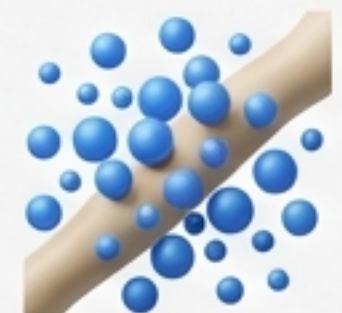
## Nanobubbles

**Type:** Capital Investment

**Cost:** High Upfront (~\$20k/acre)

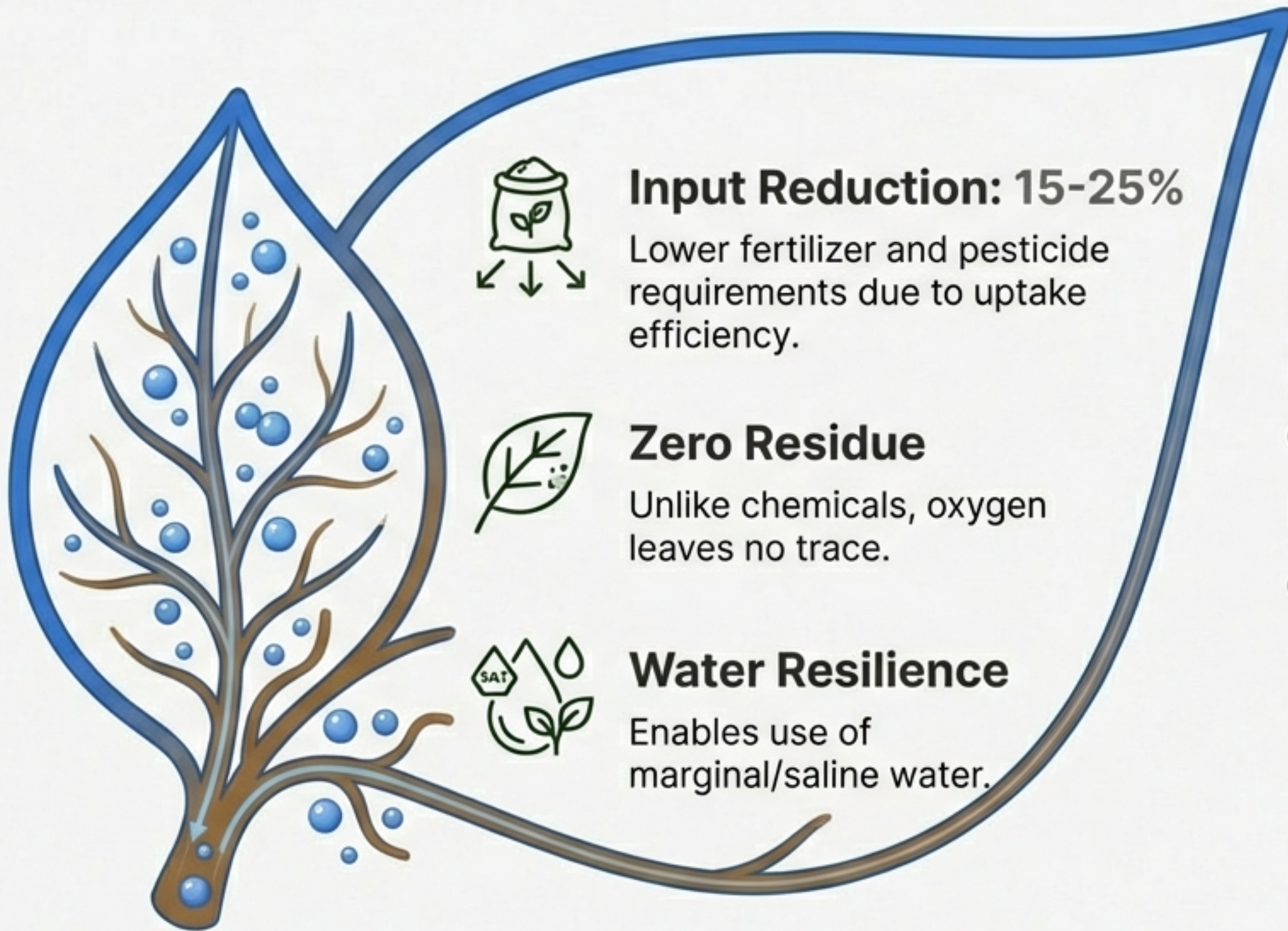
**Benefit:** Low Ongoing Cost

**ROI:** 1-3 Years



For high-value crops like strawberries, the infrastructure investment creates a permanent yield advantage.

# Sustainability Profile



Improving efficiency to reduce chemical dependency.

# Implementation Strategy

Inter Regular: High-Value Controlled Environments



## 1. Assess

Analyze water quality & soil microbiome.

Data: Water sample, Soil test



## 2. Install

Integrate NB generator into main irrigation line.

Hardware: NB Unit



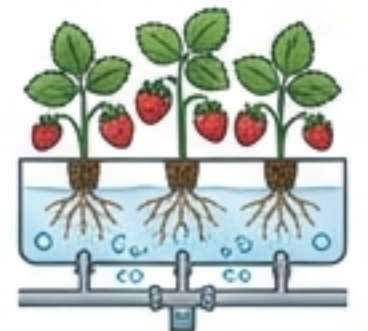
## 3. Inoculate

Apply Comamonas & Bacillus; Allow NBs to establish aerobic zones.

Input: Probiotics, NB Activation

**Target Application:**  
**Hydroponic/Drip Strawberries**

**Why? 14% Yield Increase + 74% Disease Reduction** maximizes CapEx utility.





# The Future is Aerobic.

Biology provides the potential. Technology provides the environment. To maximize the genetic potential of modern crops and biofertilizers, we must first solve the oxygen limitation. The Oxygen Synergy is the foundation for the next generation of yields.

**Assess your water quality and soil microbiome to determine your NB integration strategy.**